



MONTHLY MEMBERSHIP PROGRESS REPORT

District 322C3

Results as of: 3/31/2015

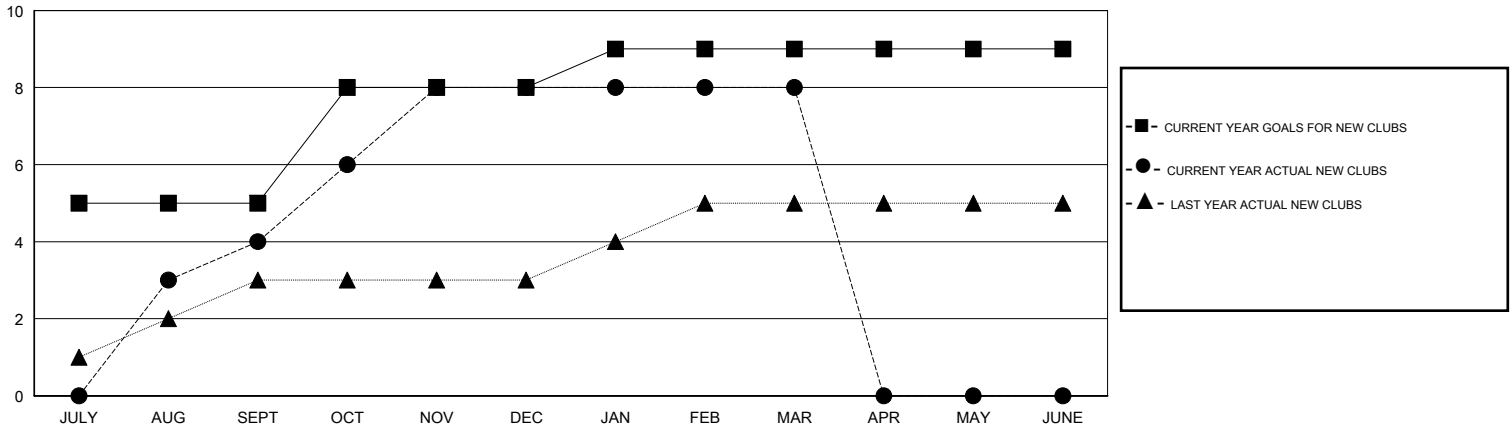
GMT: NAZMUL HAQUE

LOCATION INDIA

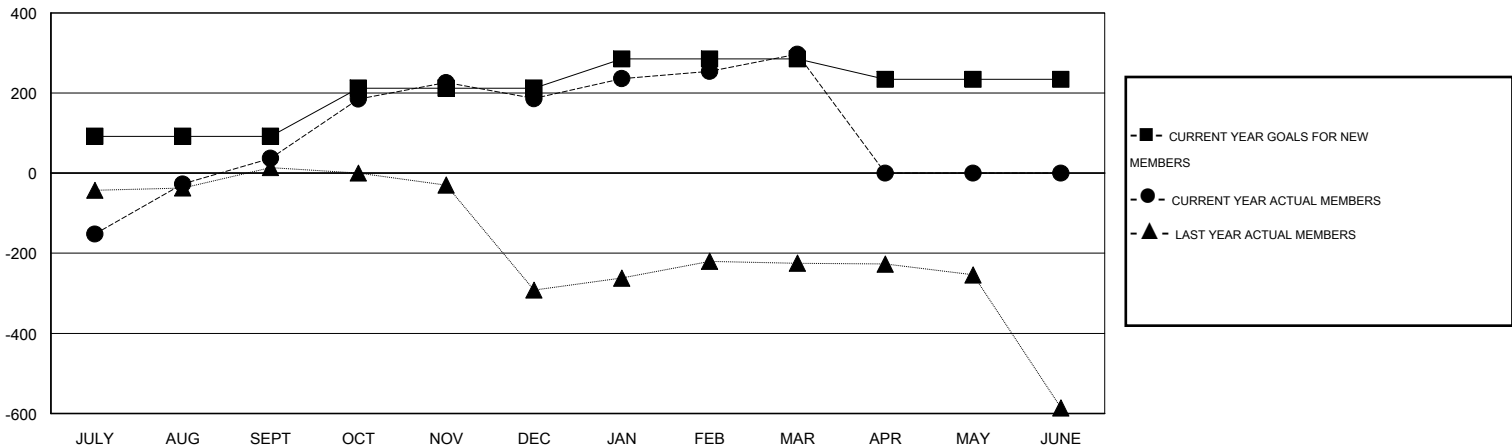
GMT CA 6

Clubs					Members				
RESULTS FOR 2014-2015					RESULTS FOR 2014-2015				
QUARTER	NEW CLUB GOAL	NEW CLUBS	DROPPED CLUBS	NET GAIN/LOSS	QUARTER	NEW MEMBER GOAL	CHARTER AND NEW MEMBERS ADDED	DROPPED MEMBERS	NET GAIN/LOSS
JULY/AUG/SEPT	5	4	3	1	JULY/AUG/SEPT	92	307	270	37
OCT/NOV/DEC	3	4	1	3	OCT/NOV/DEC	120	233	84	149
JAN/FEB/MAR	1	0	2	-2	JAN/FEB/MAR	73	177	66	111
APR/MAY/JUNE	0	0	0	0	APR/MAY/JUNE	-51	0	0	0

GOALS AND ACTUAL NEW CLUBS CUMULATIVE



GOALS AND ACTUAL MEMBERS CUMULATIVE



DROPPED CLUBS: 6	79 CLUBS OF 105 ADDED 1 OR MORE NEW MEMBERS	<u>GENDER DISTRIBUTION</u>	
<u>DROPPED MEMBERS</u>		MALE	2,740 (78.92%)
DECEASED	8	FEMALE	732 (21.08%)
CLUB CANCELLED	102	CLICK HERE FOR HEALTH ASSESSMENT DATA	
OTHER	310	FAMILY UNIT MEMBERS	1,824
TOTAL	420	HEAD OF HOUSEHOLD	724
		NON-HEAD OF HOUSEHOLD	1,100